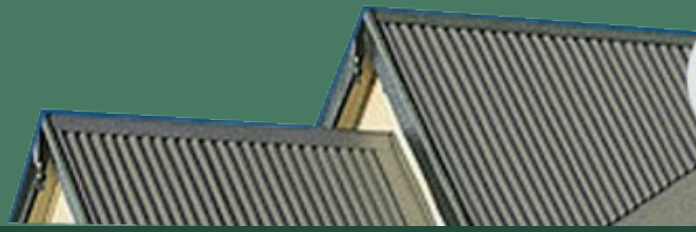




# SAFETOR ROOF ANCHORS



When your life is on the line

## Safetor Structural Anchors

This is the Safetor range of structural anchors. When bolted to the structure they can all be used as:

1. Fall-Arrest anchor points
2. Abseil anchor points
3. Lifeline end anchors



### S/E 015HP

The S/E 015HP anchor is designed to be bolted to 4 x 2 timber trusses / timber purlins or steel purlins.

This High Profile anchor can be used for fall-arrest, abseil and as an end anchor for lifelines.



### S/E 001LP

The S/E 001LP anchor is designed to be bolted to a structural member.

This anchor can be used for fall-arrest, abseiling and as an end anchor for lifelines.



### S/E 002LP

The S/E 002LP anchor is designed to be bolted to 4 x 2 timber trusses / timber purlins or steel purlins.

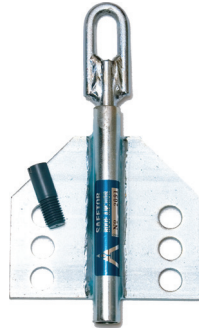
This Low Profile anchor can be used for fall-arrest, abseil and as an end anchor for lifelines.



### D/E 003

The Safetor D/E 003 Height Safety Anchor is designed to be installed where two roof planes falling in different directions do not share a common ridge and may be separated by a wall causing a step.

One end of the anchor protrudes up through the higher roof plane while the other protrudes down through the soffit.



### C/A 004

The CA 004 Concealed Roof Anchor are designed to be bolted to timber structures but may just as easily be bolted to steel as required.

1. Fits all types of smooth surfaced roofs - pan or crest fixed.
2. Can be turned upside down to give more options of fixing to structure below roof.
3. Removable eyebolt allows the roof anchor to be concealed while not in use.
4. Provides a clean roof line where protruding Anchors would detract from visual appearances.



### S/E 005HP

The S/E 005 anchor is designed to be bolted to the purlin mounting brackets on steel structures behind the purlins.

This High Profile anchor can be used for fall-arrest, Abseiling and as an end anchor for lifelines.



### S/E 005LP

The S/E 005 anchor is designed to be bolted to the purlin mounting brackets on steel structures behind the purlins.

This Low Profile anchor can be used for fall-arrest, Abseiling and as an end anchor for lifelines.



### S/E 006HP

The S/E 006HP anchor is designed to be bolted to 4 x 2 timber trusses / timber purlins or steel purlins.

This High Profile anchor can be used for fall-arrest, abseil and as an end anchor for lifelines.



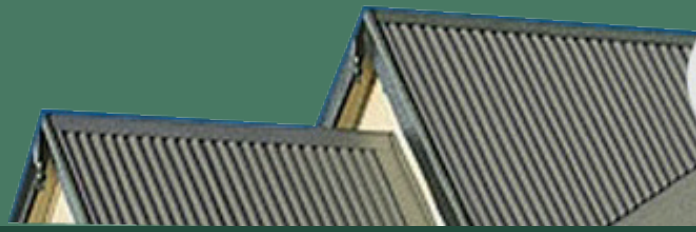
### S/E 007HP

The S/E 007HP anchor is designed to be bolted to 4 x 2 timber trusses / timber purlins or steel purlins.

This High Profile anchor can be used for fall-arrest, abseil and as an end anchor for lifelines.



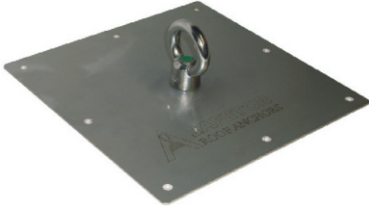
# SAFETOR ROOF ANCHORS



When your life is on the line

## Safetor Surface Mounted Anchors

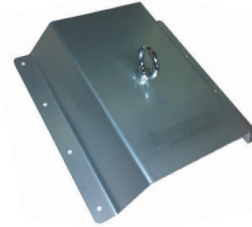
The Safetor Surface Mounted Anchors are manufactured from Stainless Steel and are riveted and bonded to roofing profiles.



FSM 250 Anchor for Corrugated and Flat Surfaced Roofs



Trapezoidal Anchor



Tray & High Profile Roof Anchor

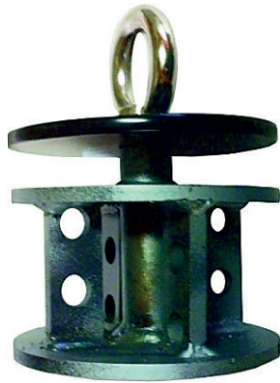


Tray & High Profile Roof Anchor

All Safetor Surface Mounted Anchors meet the requirements of the AS/NZS 1891.2:2001 Standards Horizontal Lifeline and Rail Systems and AS/NZS 1891.4:2009 Standards Industrial Fall Arrest Systems and Devices.

## Safetor Concrete Anchors

“New Zealand’s leading height safety anchoring devices”



### Safetor Reinforced Anchor

This anchor is designed to be cast into concrete.

This anchor can be used for any number of applications:

- Fall-arrest anchor
- Abseil anchor
- Lifeline anchor
- Scaffold anchor
- Access and Egress ladder anchor
- Building tie down anchor
- Anchoring down Machinery

NB: This anchor does not require cell tested.



### Tri-Chem

This concrete anchor is attached to the concrete by using 3 or 4 x 16mm threaded anchor rods which are used with a capsule bonding system.

NB: This type of anchor needs to be cell load tested as per the AS/NZS 1891.4:2009 Standards.



### Bolt Through Anchors

This anchor is designed to be bolted through concrete.

They range in size from 16mm-30mm dia x 100mm-500mm long, with a round disc washer 10mm thick is placed on both sides to protect the concrete from chipping.

NB: This anchor does not require cell tested.

# SAFETOR ROOF ANCHORS

When your life is on the line

For more information on our products  
call or text Nick Collins on 021 448 004

or email: [nick@roofanchors.co.nz](mailto:nick@roofanchors.co.nz)

or visit [www.roofanchors.co.nz](http://www.roofanchors.co.nz)

All Safetor Concrete Anchors meet the requirements of the AS/NZS 1891.2:2001 Standards Horizontal Lifeline and Rail Systems and AS/NZS 1891.4:2009 Standards Industrial Fall Arrest Systems and Devices